

Draft Project Brief

Project Name	Hazlehead Grove Nursery	Version	V3
Project Sponsor	Mark Reilly, Head of Environment	Date	7 May 2014
Purpose of Document	To ensure the project has a commonly understood and well-defined start point by providing an overview including the project's purpose and any known constraints.		

1. Project Background

The following motion by Councillors Boulton and Thomson was passed by Council on 6th March 2013:

“That this Council asks for a report looking at ways to deliver social enterprises on the remaining part of the site of Grove Nursery specialising in horticulture/allotments and other appropriate activities, and the opportunity of including the wider community. This is an essential part of the Administration’s desire to create a climate change park involving the wider policies.”

Subsequently, the Housing and Environment Committee agreed to establish a working group to explore ways of using the Hazlehead Grove Nursery site to deliver a social enterprise and other activities with the involvement of the wider community.

The Nursery site spans approximately 7.3 hectares and was originally used by Aberdeen City Council to grow and cultivate trees, plants and flowers. The Nursery was closed in 2009 as part of budget savings, although the depot remained in use. The majority of plants now planted by Aberdeen City Council are sourced externally.

The infrastructure of the nursery is still in place and although significant work and investment would be required to have the nursery up and running as it was, there is the potential to start some projects immediately.

The service has already in place successful links with social enterprise and local community groups and it is hoped that these links can be developed in a way that would see the nursery site used successfully once again to grow the city’s plants as well as use the site for other green / in bloom initiatives.

Ideas for potential use of the site include a social enterprise, growing plants for the City; school gardens and an outdoor classroom; local and city-wide community initiatives and an operational depot for grounds maintenance staff.

This is a unique space, large enough to accommodate various numbers of groups and projects, offering an opportunity for the City to develop people and improve life skills.

2. Project Vision

As developed by the Hazlehead Grove Nursery Project and approved at the Housing & Environment Committee of 3 March 2014:

Draft Project Brief

*Hazlehead Grove Nursery
– a smart, green place to grow people and communities.*

3. Project Aim and Objectives

Aim: In partnership with a social enterprises, school and community organisations, develop and implement a plan for transforming the existing Hazlehead Grove nursery site into a working nursery.

Objectives:

1. To develop and implement a plan for the transformation of Hazlehead Grove nursery into a potentially award winning social enterprise working nursery.
2. To identify and select social enterprise group/groups to enter into partnership with to develop the Nursery site.
3. To identify and select community and other local organisations to find initiatives to develop remaining unutilised areas of the site for amenity and horticultural use.
4. To take into account the operational needs of the service as it considers and implements depot rationalisation initiatives involving the operational depot at the Hazlehead Grove nursery site.
5. To identify and source funding for Project from external sources.

4. Project Workstreams

WORKSTREAM 1: Physical development of site

To ensure the Grove Nursery site is appropriately prepared and developed for use i.e. preparation of plots; pathways; car parking; access; welfare and other facilities etc.

WORKSTREAM 2: Environmental Services – Depot Build

To take into account the operational needs of the service as it considers and implements depot rationalisation initiatives. This will include the build of a new depot at Grove Nursery.

WORKSTREAM 3: Third Sector

To identify, select and manage the involvement of social enterprise organisations/projects at the nursery site.

WORKSTREAM 4: Social Care and Well Being

To establish the criteria for projects/placements clients may participate in at the nursery and the desired outcomes. This workstream will feed directly into the social enterprise workstream.

WORKSTREAM 5: Education

To plan, develop and manage outdoor learning opportunities at the Grove Nursery.

Draft Project Brief

WORKSTREAM 6: Community Use

To identify, select and manage community involvement in the site, supporting groups and organisations in developing initiatives for amenity and horticultural use.

WORKSTREAM 7: Craigiebuckler and Seafield Community Council

To plan, develop and implement plans for the use of a plot of land by Craigiebuckler and Seafield Community Council including the potential for community growing plots.

5. Proposed division / use of the site

The Hazlehead Grove Nursery site spans in total approximately 7.3 hectares.

It is proposed that approximately 1.2 hectares is set aside and used as operational and social enterprise space. This would include:

- Working nursery
- Greenhouses and polytunnels
- Frame yard
- Potting shed
- Staff facilities including car parking
- Depot for Hazlehead staff
- Spoil heap

This nursery space will accommodate the business venture with social enterprise but will also be used as an educational space for schools and community groups.

It is proposed to divide the remainder of the site into useable plots i.e. school garden, community garden, wildlife area, picnic area etc. No decision has been made to date on what the plots will be used for or the size of each plot to be made available.

Pathways and set boundaries are all now mostly lost or overgrown so the shape of plots can be changed to suit what is required of them. Natural boundaries do exist in the form of tree belts and hedges and these do give the site evenly split and dividable plots. These boundaries give the site a very natural and countryside feel.

The main part of the site has been split into 8 plots of approximately 5000M² or roughly the size of a football pitch. There is obviously scope for these plots to be further split depending on what they may be used for.

The North / East corner of the site is seen as the most suitable for an education space / school garden. This area covers approximately 1.3 hectares. This is a very large area of ground and may be too big for the schools alone. This area was chosen for its proximity to the nursery and also is an area that is almost at a stage where works can begin.

The current green waste area of around 0.5 hectares remains. The long term plan for the service's green waste is currently under review.

The site in general has not been worked for 20 plus years and because of this much of the

Draft Project Brief

area is very wet and the trees planted 20 years ago for use elsewhere in the city have been left to grow and are now mature.

To help with the drainage issue it is suggested that a pond / wildlife area be created. This could be used as a natural drainage and water retention area and also be a popular visitors site.

Parts of the site are also full of spoil that would require to be removed to allow for the plots to be worked properly.

6. Budget

The Project Sponsor and Project Manager will be responsible for sourcing budget to fund/support the wider project from fundraising and external grants. Workstream leads will also be responsible for developing detailed business plans as to how specific initiatives within the project will be funded and financially sustained.

7. Expected Benefits

- Climate change
- Strategic Infrastructure Plan
- Britain in Bloom 2014
- Potential for Project to be recognised nationally
- Potential to develop a training facility for other Council services such as building etc.
- Job creation through social enterprise initiatives
- Creation of outdoor learning facilities
- Improved health and wellbeing of the citizens of Aberdeen

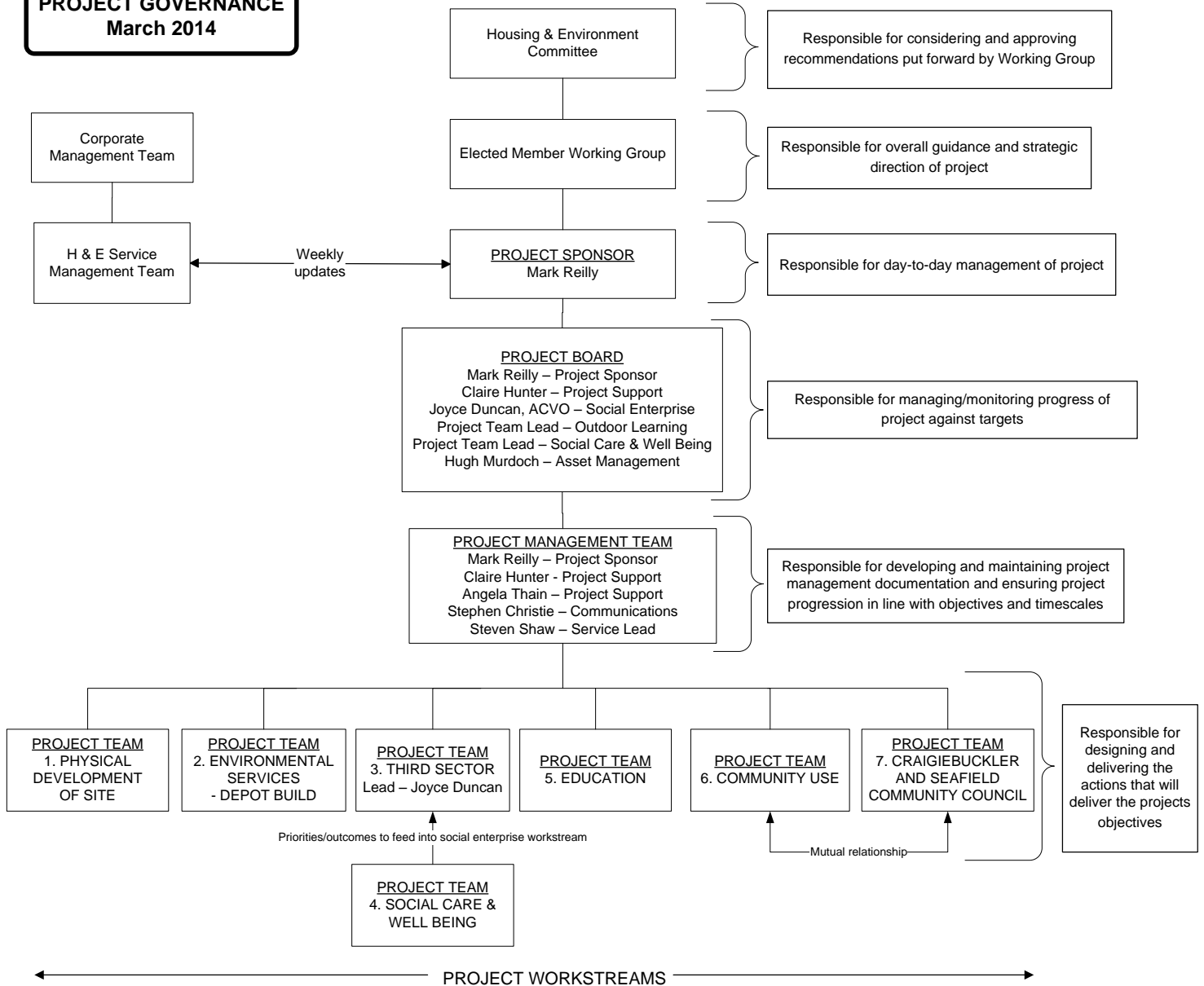
8. Risks

- This is a high profile project that will therefore require a well considered communications and engagement plan.
- Governance of Aberdeen City Council with Social Enterprise – vital to ensure the correct partnership arrangement is put in place.
- Local Delivery Plan – change of land use
- Health and Safety of those using the nursery in the future

9. Governance Arrangements

See Page 5.

PROJECT GOVERNANCE
March 2014



Revision History		
Date	Reason	By
29 May 2013	Draft Project Brief prepared as part of project definition stage	Claire Hunter
16 April 2014	Further development of project brief for distribution to Project Board.	Claire Hunter
29 April 2014	Amendments to brief following feedback from the Elected Member Working Group of 23 April 2014.	Claire Hunter
7 May 2014	Amendments to brief following Committee consultation process.	Claire Hunter